

CORPORATE PROFILE



**Lytton
First
Nation**
Economic Development Corp.

LFNEDC.COM



LYTTON FIRST NATION ECONOMIC DEVELOPMENT CORP.

Our vision is to contribute to the success of the Lytton First Nation community through sustainable partnerships, job creation and business development, which focuses on; preserving our lands, culture, and heritage values, with an emphasis on intergenerational prosperity and respect.



WELCOME MESSAGE

Welcome to the Lytton First Nations Economic Development Corporation. As proud members of the Lytton First Nation, we have played a key role in the recovery and rebuilding efforts following the devastating wildfires of 2021, 2022 and 2023. Through vision, resilience, and strong partnerships, we have successfully launched several businesses that contribute to our community's growth and prosperity.

With the support of our committed Board of Directors, a passionate team, and solid operational capacity, we focus on opportunities that build capacity, honour our values, and create shared benefits.

We invite you to join us in exploring future opportunities, rooted in cooperation and mutual respect.

Kukstsémc (Thank You)

Jason Robertson, President





“The Lytton First Nation Economic Development Corporation (LFNEDC) aims to create economic development and business opportunities that benefit and serve the needs of the greater Lytton First Nation community.”

WHO WE ARE

The Lytton First Nation Economic Development Corporation (LFNEDC) aims to create economic development and business opportunities that benefit and serve the needs of the greater Lytton First Nation community. We have established several sustainable businesses that provide long-term employment and align with our cultural values. Our aggregate business, along with our trucks and equipment, enables us to participate in civil, commercial, and residential construction projects both within and beyond our communities.

We have a progressive, collaborative, and dedicated team that is always open to exploring opportunities that build capacity, align with our values, and provide mutual benefits.

LFNEDC PARTNERSHIP & SERVICES

LFNEDC offers comprehensive partnership opportunities and construction services across multiple sectors.

Partnership Focus Areas:

Civil Projects: Infrastructure development and public works

Commercial Projects: Business and industrial construction

Residential Projects: Housing and community development



HEAVY EQUIPMENT FLEET

Construction machinery and equipment rental/operation.



AGGREGATE DIVISION

Materials supply and processing.



WATER TRUCK SERVICES

Water delivery and dust control.



OPERATIONS TEAM

Project management and coordination.



HAULING SERVICES

Material transportation and logistics.



SEPTIC SERVICES

Septic system installation and maintenance.

Partnership Benefits:

Mutual benefit agreements

Job creation opportunities

Skill development programs

Full project support from multiple divisions

Work within communities and Traditional Trade Territory



COMMUNITY

Lytton First Nation has 14,161 acres of land divided into 56 reserves, located at the First Nations Village of TLKEmchEEEn, meaning “where the Rivers Cross” (at the junction of the Thompson and Fraser River). Geographically, our communities are surrounded by the Cascade, Coast and Clear Mountain Ranges; and positioned along the Trans-Canada Highway, 260 km N.E. of Vancouver, between the towns of Hope and Cache Creek, along an expansive 100-kilometer radius on both sides of the Fraser River.

We have occupied our lands and practiced our traditions since time immemorial. Ecologically and geologically diverse, water is perhaps the most significant of the natural resources available to the Nation, with the Stein River water system meeting the water needs of many of our community members. Natural spring waters are available in various areas.



PROJECTS

Rooted in the strength of our land and guided by the vision of our people, our projects reflect both tradition and progress. Each initiative is shaped by a commitment to care for the land, create opportunities for future generations, and build a thriving community. From the ground up, these ventures tell a story of resilience, growth, and the enduring spirit of the Lytton First Nation.

Businesses

- TLKemchEEEn Aggregates
- TLKemchEEEn Industrial & RV Park
- TLKemchEEEn Lodge

Real Estate

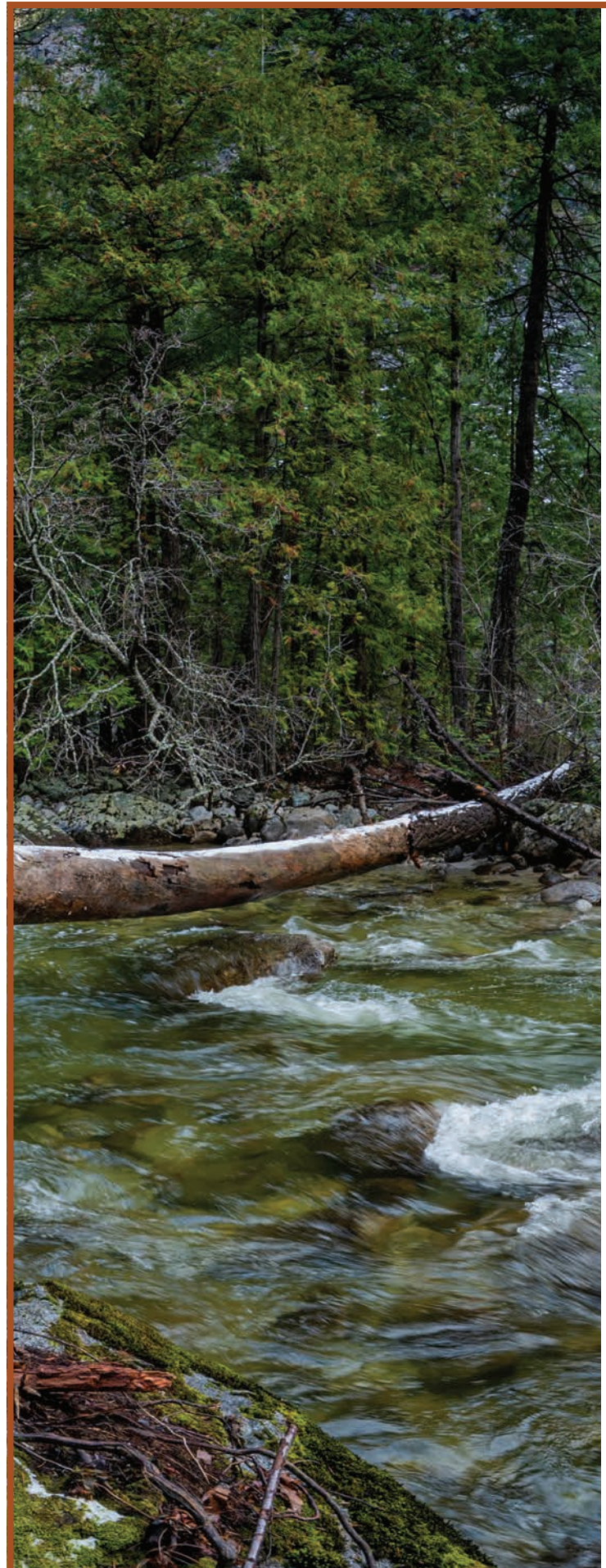
LFNEDC oversees properties both within our community and beyond, including the former Lytton Airport. We welcome inquiries and invite proposals for commercial development projects.

Contact

John Reed, CEO | john@lfnedc.com

Glenda Wasylenko, CFO | glenda@lfnedc.com

Jarret Raphael, Operations Manager | jarret@lfnedc.com





TLKemchEEn Aggregates – Professional Services

TLKemchEEn Aggregates provides comprehensive aggregate materials and construction supplies to support your project needs.

Products & Services

Complete Range of Sand Products

Base Course Materials

Clear Rock Products

CONTACT: Jarret Raphael, Operations Manager | Phone: 778-254-6007 | Email: jarret@lfnedc.com



TLKemchEEn Industrial & RV Park

We are pleased to announce the launch of the TLKemchEEn Industrial & RV Park with the following anchor tenants:

Timber Mart

United Rentals

TLKemchEEn Mini-storage

Return-It Bottle Depot

RV Park

CONTACT: RV Availability email: info@lfnedc.com | Business Inquiries email: john@lfnedc.com



TLKemchEEn Lodge – Workforce Accommodation

LFNEDC has partnered with Land Sea Camps which is owned by LFN and managed by LFNEDC, to establish TLKemchEEn Lodge, a 100-person workforce accommodation facility located at the former Lytton Airport site, which is owned by the LFNEDC Group of companies.

Accommodation Services

The lodge provides comprehensive workforce housing solutions for workers in the Lytton area, offering accommodation for up to 100 people in a professionally managed facility.

CONTACT: Lodge: tlkemcheen@landseacamps.com | Location & Business: John Reed at john@lfnedc.com

BOARD OF DIRECTORS

Our Board of Directors is comprised of dynamic individuals with diverse backgrounds and expertise. The Board provides direction, recommendations, and connections, which help staff to address complex issues and opportunities in a supportive and collaborative manner for the betterment of the organization.



JASON ROBERTSON
PRESIDENT



PAULA CRANMER-UNDERHILL



ROY SPINKS



JOHN SAM



CHEYANNA HANNA



TROY ABROMAITIS

MANAGEMENT TEAM



JOHN REED
CEO



GLENDA WASYLENKO
CFO



DARRYL MCINTYRE
OPERATIONS SUPERVISOR



JARRET RAPHAEL
OPERATIONS MANAGER

PARTNERS

LFNEDC is pleased to work with select partners on Civil, Commercial, Forestry and Residential projects which take place within our communities, Traditional Trade Territory, and beyond. Our teaming agreements focus on mutual benefit, job, and skill creation.

With our aggregate division and fleet of heavy equipment, operations team, septic, hauling, and water trucks, we're here to support your project every step of the way.

Teaming Agreement Benefits & Structure

LFNEDC's teaming agreements are designed to create mutually beneficial partnerships that strengthen both organizations while delivering exceptional project outcomes.

Key Agreement Components

Mutual Benefit Focus:

Agreements structured to benefit all parties involved

Job Creation:

Emphasis on creating employment opportunities within communities

Skill Development:

Training and capacity building programs

Resource Sharing:

Access to LFNEDC's full range of equipment and services

Cultural Considerations:

Respect for Traditional Trade Territory and community values

Partnership Advantages

Comprehensive project support from aggregate to completion

Access to specialized equipment fleet

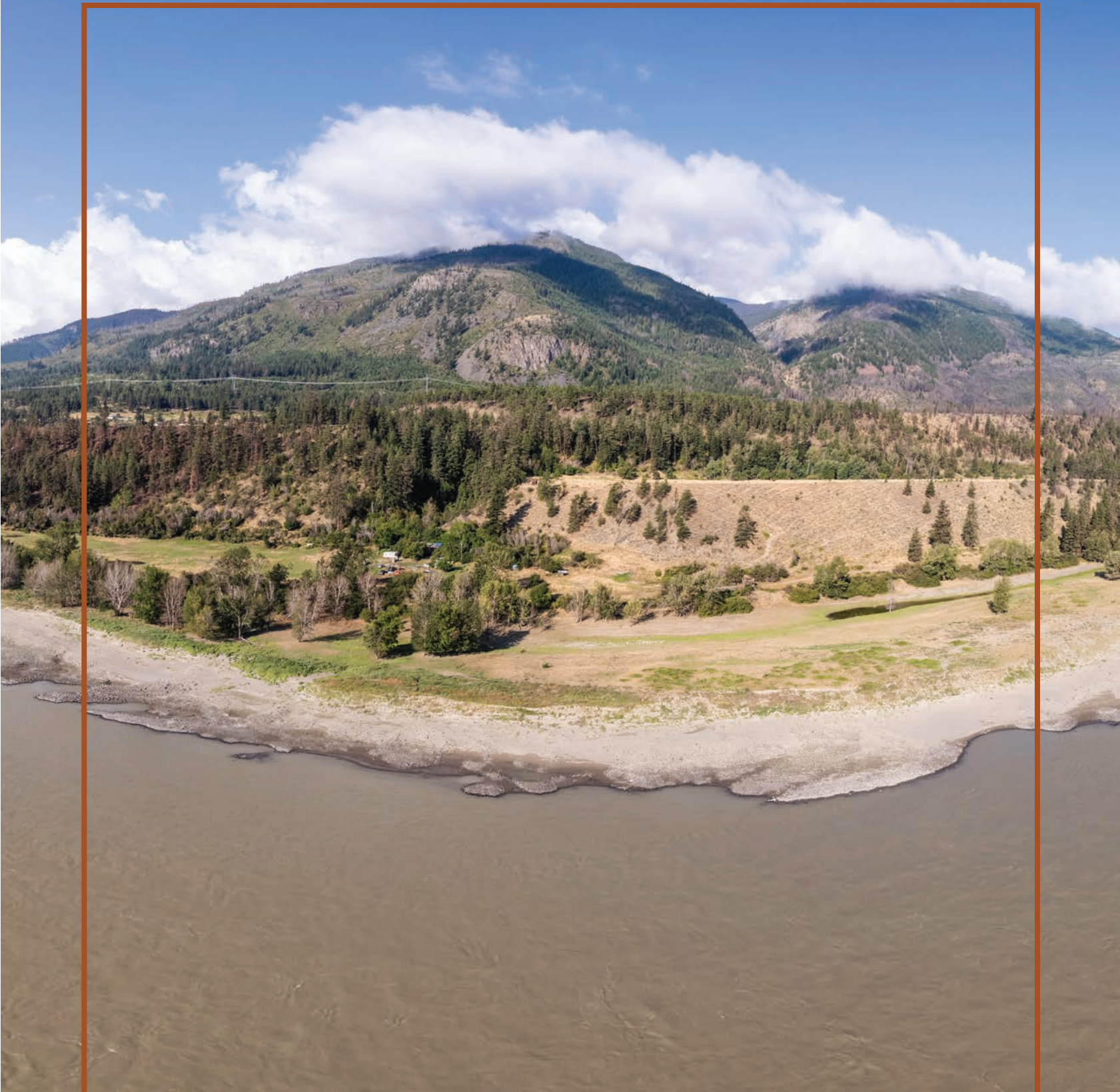
Experienced operations team

Integrated service delivery (septic, hauling, water)

Community-focused approach

Established territorial knowledge and relationships





**Lytton
First
Nation**
Economic Development Corp.

PHONE NUMBER
236.972.8615

EMAIL
info@lfnedc.com

ADDRESS
PO Box 500
Lytton, BC, V0K 1Z0

LFNEDC.COM